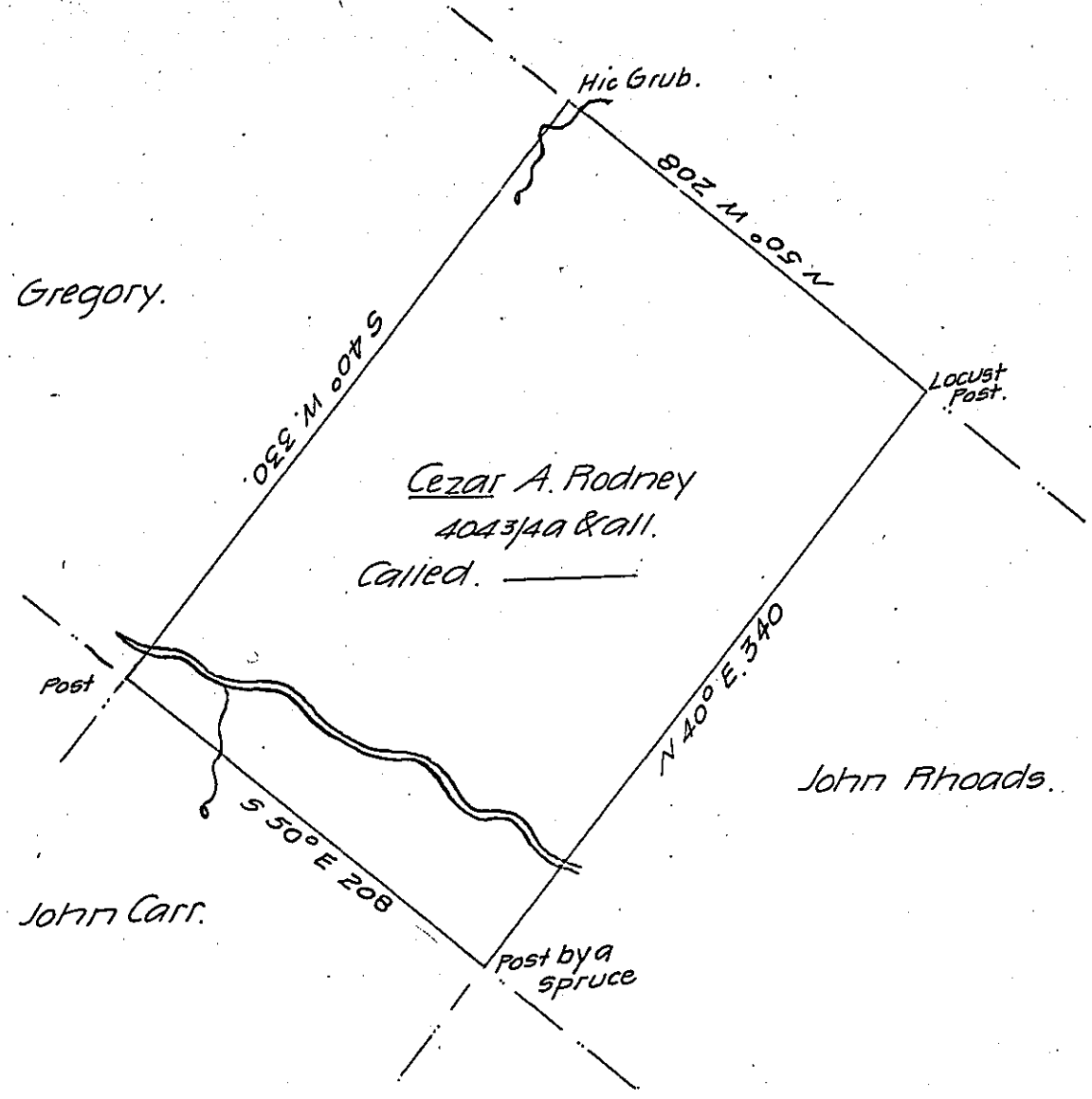


James Gregory.



Situate on Scaffold Camp Run a Branch of Wills Creek in
 Londonderry Township Bedford County and Surveyed the 11th day
 of March 1794. In Pursuance of a Warrant dated the 19th day ^{- July} 1793

By John Wells (son of Richard)

Approved George Woods Junr. D.S.

To Daniel Brodhead Esqr.

Surveyor General

IN TESTIMONY that the above is a copy of the original remaining on file in
 the Department of Internal Affairs of Pennsylvania, made
 conformably to an Act of Assembly approved the 16th day of
 February, 1833, I have hereunto set my Hand and caused
 the Seal of said Department to be affixed at Harrisburg,
 this twentieth day of September 1906

George D. Brown
 Secretary of Internal Affairs.